

FRANCESCA  
BASILE

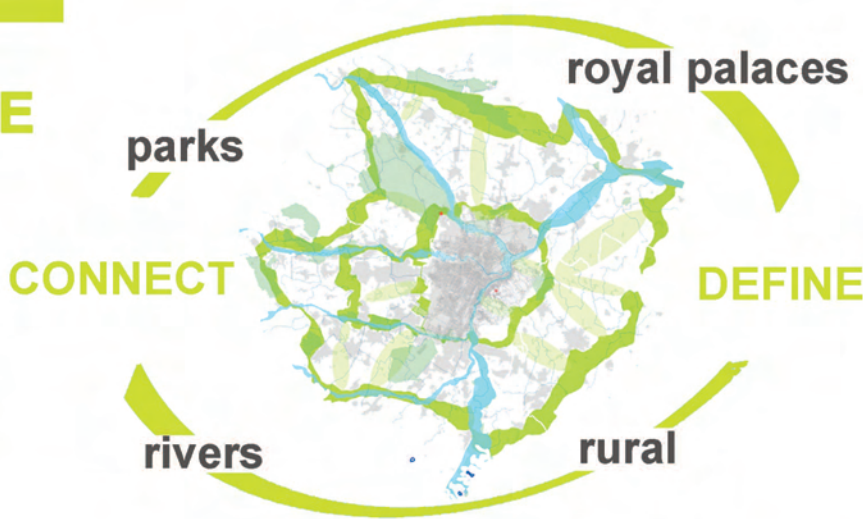
Municipality of Rivalta di Torino

# Project Proposals for the Enhancement of the Landscape in Corona Verde.

THE STRATEGY OF URBAN EDGES IN THE TOWN OF VENARIA REALE

## CORONA VERDE

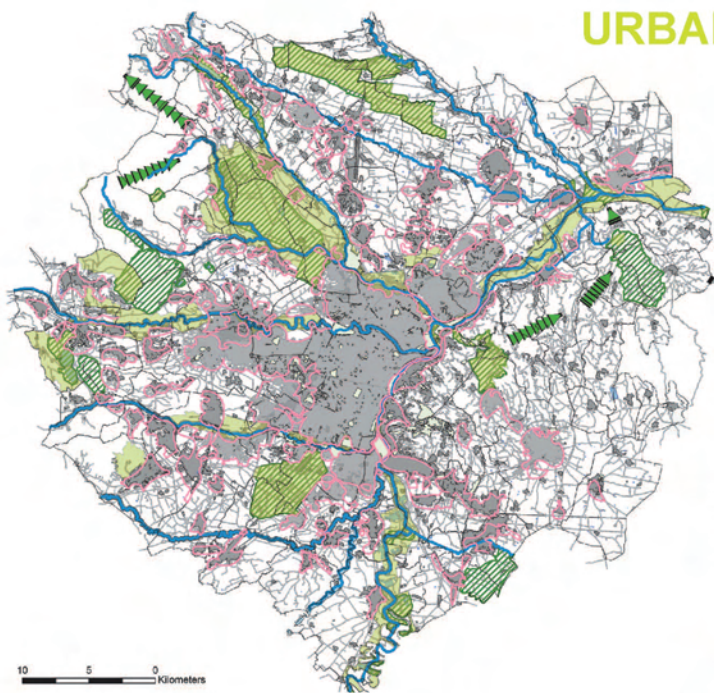
is a strategic project between planning and governance which coordinates preservation and enhancement actions of the landscape in the Turin metropolitan area.



4  
S  
T  
R  
A  
T  
E  
G  
I  
E  
S

- increase of **ECOLOGICAL NETWORK**
- completion of **FRUITION NETWORK**
- quality of **PERI-URBAN AGRICULTURE**
- redesign of **URBAN EDGE**

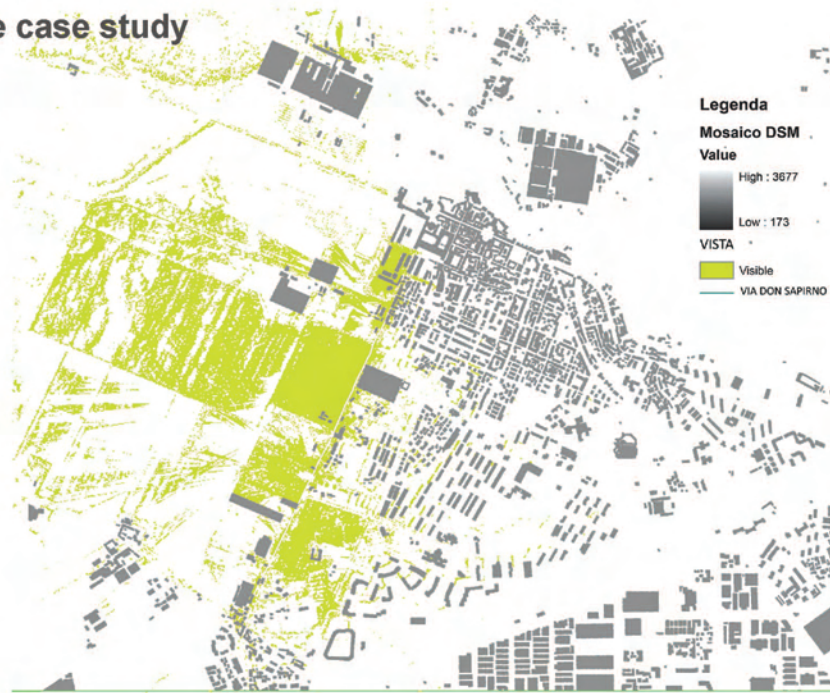
The arboreal, floral and shrub-like essences utilized in my project are all included in a Manual.



- URBAN EDGES**
- Legenda**
- COMUNI AMBITO
  - SISTEMA NATURALE
  - IDROGRAFIA
  - PARCHI
  - AREE PROTETTE
  - CORRIDOI ECOLOGICI
  - CORRIDOIO ECOLO IDRO
  - RETE NATURA 2000
  - SISTEMA ANTROPIZZATO
  - VIAIBILITÀ
  - FERROVIA
  - URBANIZZATO
  - BORDI URBANI

The case study

V  
E  
A  
N  
R  
I  
A  
R  
E  
A  
L  
E



- Legenda**
- Mosaico DSM
- Value
- High : 3877
  - Low : 173
- VISTA
- Visible
  - VIA DON SAPIRNO

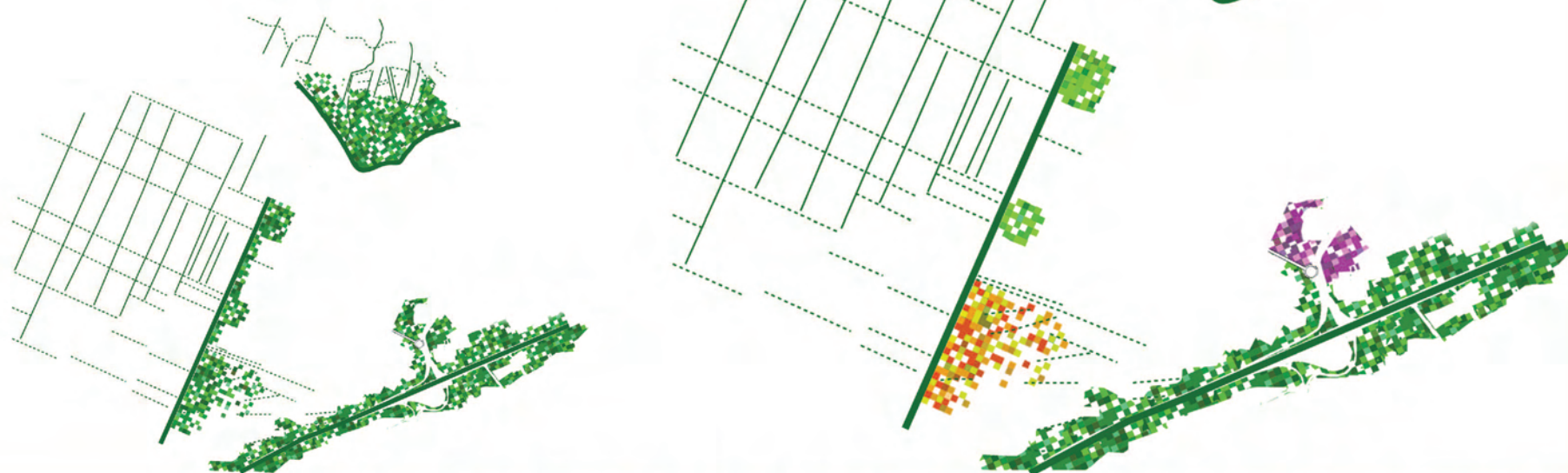
THE GREEN COMPONENTS ARE THE BASES OF THE TERRITORIAL PROJECT

4  
T  
Y  
P  
O  
L  
O  
G  
Y

- WILDFLOWER
- GREEN WALL
- URBAN FORESTRY
- FLORICULTURE

R  
O  
L  
E

LANDSCAPE  
PROTECTIVE  
ECOLOGICAL  
PRODUCTIVE



7<sup>th</sup> international **AESOP**  
SUSTAINABLE FOOD PLANNING CONFERENCE  
Localizing Food Strategies 2015  
FARMING CITIES +  
PERFORMING RURALITY 8.9/10 **TORINO**



POLITECNICO DI TORINO  
UNIVERSITÀ DEGLI STUDI DI TORINO  
University of Gastronomic Sciences  
Università degli Studi di Scienze Gastronomiche

POSTER SESSION