

## LE:NOTRE Landscape Forum Bucharest

In April 2015 over a 100 academics from 20 countries participated. One of the four themes focused on spatial developments in the rural fringe and local food production in Pantelimon in the city's periphery.



## Main research questions

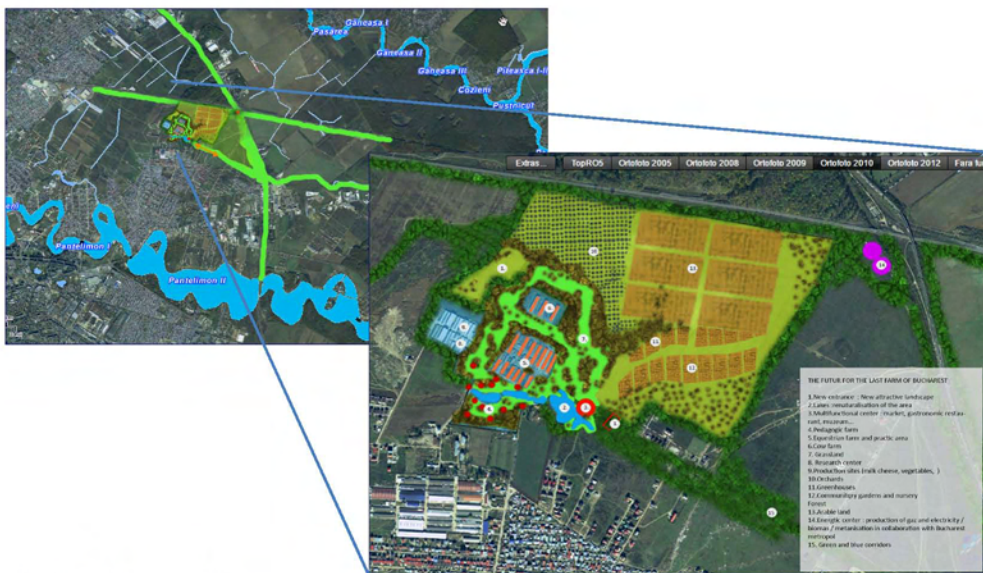
- How can the peri-urban rural landscape be developed in a sustainable way?
- How can the uncontrolled urban sprawl be organised in such a way that existing landscape values are preserved?
- How can the peri-urban landscape contribute to local food production?



## Methods

A briefing paper with research data and policies was composed by local experts. During a field trip the group met with local experts, amongst whom the chief architect of Pantelimon, a researcher of agricultural development, the manager of a huge dairy farm and shepherds herding their flocks.

Based on this information the group carried out a brainstorm of possible solutions, a SWOT-analysis, a DPSIR-model and presented their findings to local experts and representatives of the Ministry of Agriculture.



## PARTICIPANTS

Sebahat Aciksoz, Alina Adascalitei, Meryem Atik, Emel Baylan, Oana Chiriac, Jeroen de Vries, Johannes Gnaedinger, Stefanie Gruber, Mihaela Hărmănescu, Caroline Holz, Nilgöl Karadeniz, Evelina Knyszelyte, Andreea Daniela Machidon, İdil Kanterotcu, Esra Senoz, Anna Szilagyi-Nagy, Cennet Teking, Nicolas Tribot

LE:NOTRE Institute  
 Linking landscape education, research and innovative practice

## Landscape Forum Bucharest 2015



## Three strategies

To improve landscape and environmental quality, social cohesion and possibilities for leisure.

1. *Building upon the power of the dairy and educational farm and the monastery.*  
 Transforming the farm in a multifunctional estate, producing milk, cheese, vegetables and fruit and a circular flow of materials, waste and energy. Providing community and educational gardens and new formulas like "pick your own" and subscription to weekly food packages. This strategy links the farm to the community and creates new jobs in Pantelimon.

2. *Improving connectivity by developing the green and blue infrastructure, social collaboration and networks of recreational paths.*  
 With reference to Milan (Scudo, 2015) it aims to form associations of inhabitants together with small farmers. Creating a network of small local producers and markets with related agro-food producers and industry. Forming a strong brand for the dairy farm & Cernica Monastery.

3. *An overall strategic plan that includes landscape quality, quality of urban open space and diversification of residential and business areas.*  
 There are two processes: discussion and debate on the governance level and capacity building of the local stakeholders: residents, producers and enterprises.

These three strategies can help to develop the existing qualities of Pantelimon and empower the local economy. See: [www.le-notre.org](http://www.le-notre.org)



## REFERENCES

Hărmănescu, M. Popa, A. (2012). Productive rural landscape and current need of sustainable management in Dabija, A.M. (Eds) (2012). *Provocări în spațiul construit. 120 de ani de învățământ superior de arhitectură* (English), Ion Mincu University Press, Bucharest, pp 49-60.

Popa, A. (2011). Aspects of the agricultural landscape in metropolitan areas in Dabija, A.M. (Eds) (2011). *Landscape – Architecture – Technology – Ambient*, Ion Mincu University Press, Bucharest, pp 49-58.

Popa, A. (2012), 'Aspects of agricultural landscape as a cultural asset in metropolitan areas: case study for Bucharest city' in *Science- Future of Lithuania*, vol.4, nr.2, pp 128- 134

Roggema& Keeffe (eds), (2014), *Why we need small cows, Ways to design for Urban Agriculture*, VHL University of Applied Sciences, The Netherlands, pp 323-329

Internet sources  
 Scudo, G. (2015) [http://www.labcoopint.polimi.it/wp-content/uploads/ENERGY\\_Scudo.pdf](http://www.labcoopint.polimi.it/wp-content/uploads/ENERGY_Scudo.pdf) - consulted on the 24st of April 2015