

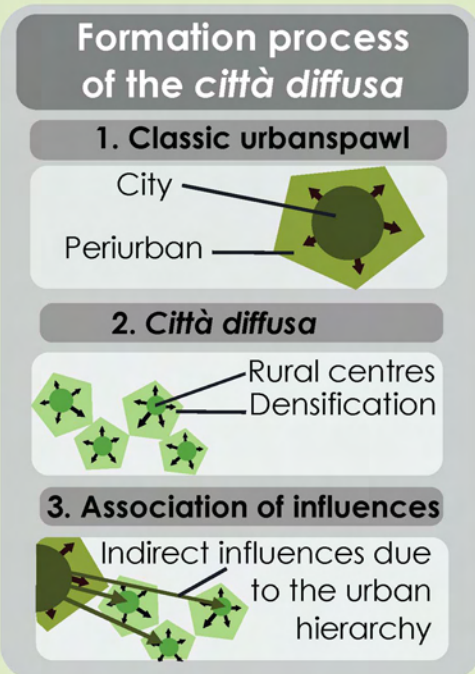
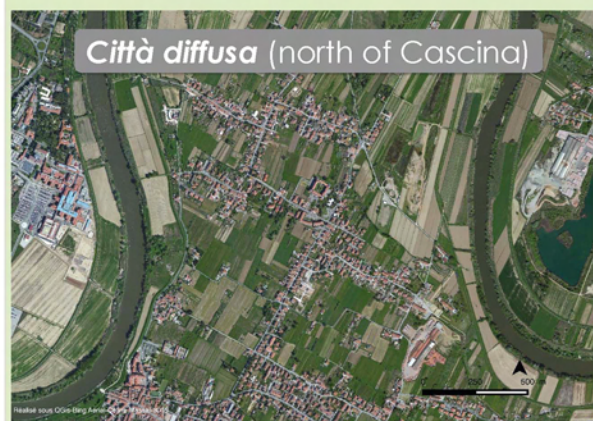
# FROM CITTÀ DIFFUSA TO CAMPAGNA DIFFUSA

CITY-COUNTRYSIDE RELATIONSHIP IN THE CORRIDOR BETWEEN PISA AND EMPOLI

## 1. Qualify the in-between

We can talk of a *città diffusa* when a rural space is so urbanized that the only difference with a classical city is its **dissemination in space**.

The *città diffusa* corresponds to an **overlapping of the residential and the agricultural area**. It is a particular form of in-between different from periurban.



## 2. Live the in-between

A personal relationship to the countryside

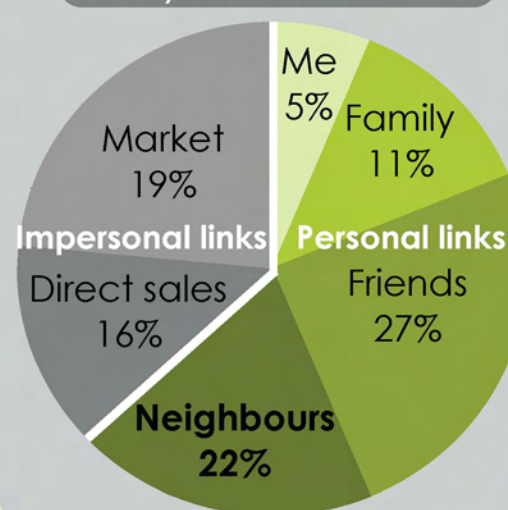


The question was to know if the morphology influences the way the space is lived, to understand if the **spatial proximity** creates a **social proximity** between « the people of the city » and « those of the countryside ».

The method used was a **questionnaire** submitted to 52 surveyed.

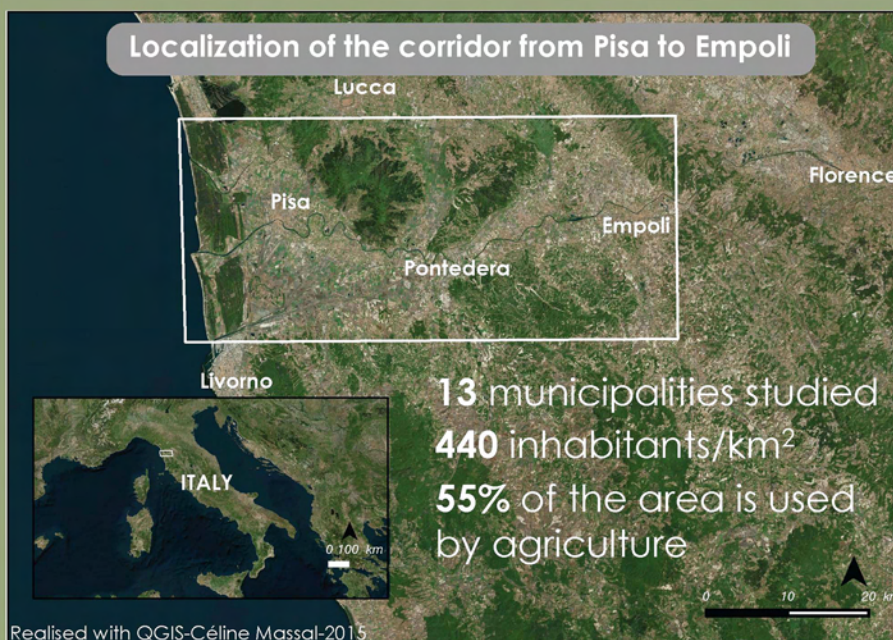
The result was that in the inhabitants' mind the City-Countryside dichotomy is maintained but a **multiplicity of links** appears between the two types of areas.

"On what occasion have you met a farmer?"



## City or countryside?

Localization of the corridor from Pisa to Empoli



The **urban population density** contrasts with the rural landuse providing a **rural landscape**. This territory can be called a **territory of in-between** questioning the **rural-urban dichotomy**.

## 3. Cultivate the in-between

The question was to understand the place of agriculture in this in-between city and countryside.

The **renewal of the agriculture's image** is global but the proximity to the activity makes the inhabitants of the region more sensitive to it.

"Twenty years ago, it was a shame for a woman to marry a farmer, today, it is a pride."



Many city dwellers thus proudly practice **hobby farming**, cultivating a plot of land during their days off to preserve the terraces or to perpetuate an **agricultural heritage**.

The recent renewal of the local administrations leads to a change in the urban policies.

As the focus is no more only on the urban, and with the will of **bringing countryside into the city**, we can say that the area is no more a *città diffusa*, but also a *campagna diffusa*.

## 4. Plan the in-between

The question was to grasp the **specificities in planning a diffused area**.

Seven **semi-structured interviews** were realised with policy-makers, inhabitants and associations.

Planning the city-countryside dissemination

### 1. Improve the coherence of the territory

- Develop public transports
- Investments
- Multiply partnership between administrative entities
- Elaboration of common projects

### 2. Protect the countryside areas

- Contain urbanization
- New urbanistic regulations
- Encourage clean transports
- New equipments (bike paths...)

### 3. Put the countryside at the service of the city

- Support local products points of sale
- Subsidies
- Encourage new farm businesses
- Bring countryside into the city
- Reflexive stage

Objectives

Mode of action